

AMADEUS HELP SHEET

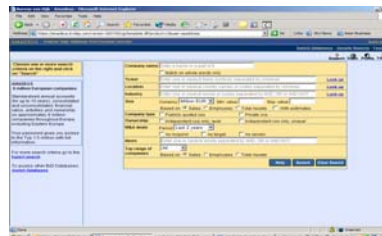
Updated 22 October 2007



AMADEUS is a comprehensive, pan-European database of financial and contact information for the top 1.5 million companies in 38 European countries. There are over 100 different search criteria with results that can contain balance sheet, contact details, director information, subsidiaries, filing dates and other trading addresses. The Expert Search tab allows for the searching and creation of company lists that can then be sorted by turnover, employee numbers and many other variables. AMADEUS is an essential search tool for anyone researching European companies.

Quick Search

The Quick Search (pictured) is sometimes the first screen to appear. If you're looking up one company or creating a basic list then you can search in this box. To do an Expert Search, click on the link to the page.



Expert Search

You don't have to be an expert to do an Expert Search. In fact this search option is the recommended way to use AMADUES. From a base of around 1.5 million companies you can narrow down a search to get a focused set.

Simply click on the different headings of interest (listed in the left column) and then follow the steps, eg if its finding companies by employee numbers, click on that and type in your number range. You must click OK to confirm the search.

The Search Summary Screen

After clicking OK a summary screen of the number of companies found will appear. You can then focus your search by clicking on more headings on the left column, such as companies by turnover (under financials) to narrow your company list further. You can take out a search step or modify one from this screen by clicking on 