



Are you a **BIOMEDICAL** or
HEALTH RESEARCHER?

If so, vital information inside...

ukpmc.ac.uk

What is UK PubMed Central?

UK PubMed Central offers access to a vast collection of biomedical and health research literature. All information in UK PubMed Central is freely available and the service – at ukpmc.ac.uk – can be used by anyone.

UK PubMed Central is supported by the principal funders of biomedical and health research in the UK – a group of government organisations and leading medical research charities.

Research publications arising from grants awarded by these organisations are submitted to UK PubMed Central, lending further visibility to this research and enabling others to benefit from it. More information on individual funders can be found at ukpmc.ac.uk/funders.

Why UK PubMed Central?

UK PubMed Central is based on PubMed Central, the online archive platform developed by the US National Institutes of Health. PubMed Central is already a huge success, providing researchers with quick and easy access to high-quality, peer-reviewed research papers.

By building on this success, and in consultation with you, representatives of the UK's biomedical and health research community, we aim to become your information resource of choice.

“PubMed Central (in the United States) and UK PubMed Central can learn from each other, improving usability and thus helping users make discoveries and gain access to a broader array of information.”

David Lipman

Director of U.S. National Library of Medicine's National Center for Biotechnology Information, founders of PubMed Central and PubMed

“UK PubMed Central has huge potential for scientists not just as a source of information about who is publishing what where, but also as a research tool to link data and text from different research studies in novel ways.”

Sir John Sulston FRS

University of Manchester; former Director of the Wellcome Trust Sanger Institute, Cambridge; Nobel Prize winner 2002

Do you have a grant awarded by any of the UK PubMed Central funding organisations?

	Arthritis Research Campaign
	BBSRC*
	British Heart Foundation
	Cancer Research UK
	Chief Scientist Office
	National Institute for Health Research
	Medical Research Council
	Wellcome Trust

If so, it is your responsibility to ensure that your research papers are made available through UK PubMed Central. To check specific conditions stated by your funding organisation/s see ukpmc.ac.uk/funders.*

*If your grant is funded by BBSRC, you should submit your papers to an available repository, preferably UK PubMed Central.

Developing UK PubMed Central

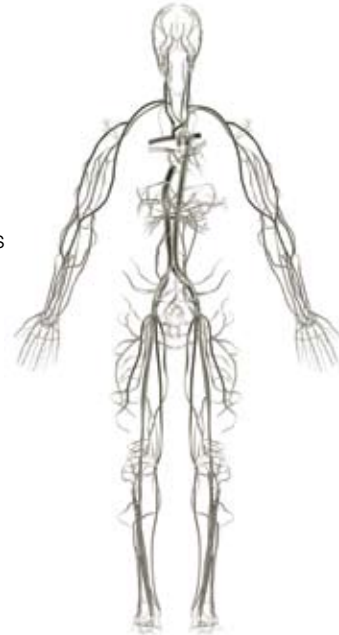
An exciting development programme for UK PubMed Central is now underway. Supported by the UK PubMed Central Funders Group a consortium of project partners, in consultation with biomedical and health researchers, are:

- Developing ingenious ways to search, retrieve and link research papers to relevant biomedical and health research knowledge
- Identifying and providing access to a wide-range of additional, valuable content
- Creating tools to enable users to track research grants: what they are, the research that arose from them, and who they were provided by

For more information about UK PubMed Central, email:



ukpmc-engagement@bl.uk



UK PubMed Central development undertaken by:

